

Deaths months and years in Germany (Source: Federal Statistical Office As of July 24, 2020)

Month	2016		2017		2018		2019		2020	
1	81.742	81.742	96.033	96.033	84.973	84.973	84.791	84.791	85.301	85.301
2	76.619	158.361	90.651	186.684	85.799	170.772	80.824	165.615	79.816	165.117
3	83.669	242.030	82.934	269.618	107.104	277.876	86.493	252.108	87.203	252.320
4	75.316	317.346	73.204	342.822	79.539	357.415	77.157	329.265	83.486	335.806
5	74.525	391.871	75.683	418.505	74.648	432.063	75.451	404.716	75.248	411.054
6	69.186	461.057	69.644	488.149	69.328	501.391	73.195	477.911		
7	72.122	533.179	71.411	559.560	75.605	576.996	76.697	554.608		
8	71.295	604.474	71.489	631.049	78.370	655.366	73.249	627.857		
9	69.037	673.511	69.393	700.442	69.708	725.074	70.826	698.683		
10	76.001	749.512	75.229	775.671	74.039	799.113	76.673	775.356		
11	77.051	826.563	74.989	850.660	74.762	873.875	77.837	853.193		
12	84.339	910.902	81.612	932.272	80.999	954.874	83.398	936.591		
Population:	82.160.000		82.520.000		82.790.000		83.020.000		83.200.000	
Share of deceased in %										
Until 01	0,099%		0,116%		0,103%		0,102%		0,103%	
Until 02	0,193%		0,226%		0,206%		0,199%		0,198%	
Until 03	0,295%		0,327%		0,336%		0,304%		0,303%	
Until 04	0,386%		0,415%		0,432%		0,397%		0,404%	
Until 05	0,477%		0,507%		0,522%		0,487%		0,494%	
Until 06	0,561%		0,592%		0,606%		0,576%			
Until 07	0,649%		0,678%		0,697%		0,668%			
Until 08	0,736%		0,765%		0,792%		0,756%			
Until 09	0,820%		0,849%		0,876%		0,842%			
Until 10	0,912%		0,940%		0,965%		0,934%			
Until 11	1,006%		1,031%		1,056%		1,028%			
Until 12	1,109%		1,130%		1,153%		1,128%			

Covid 19 - deaths until May 31, 2020 = 8,500 deaths. Year-on-year increase of 0.007% from 83,200,000 = 5,824

As a result, from the Covid-19 dead, as they are 2,676 higher by the end of May.

In addition, the dead level out over the year because those who died of flu or Covid-19 at the beginning of the year can no longer die during the year. It's just logic and nothing more.

Mortality based on 2016 in%:

Month 01	100%	17,483%	3,953%	3,730%	4,354%
Month 02	100%	17,885%	7,837%	4,581%	4,266%
Month 03	100%	11,399%	14,811%	4,164%	4,252%
Month 04	100%	8,028%	12,626%	3,756%	5,817%
Month 05	100%	6,797%	10,256%	3,278%	4,895%

Growth of population: 100% 0,438% 0,767% 1,047% 1,266%

In the middle to May 12,318% 9,897% 3,902% 4,717%

Adjusted for population growth: 11,880% 9,130% 2,855% 3,451%

And again, 2017 + 2018 based on 2016 was over-mortality due to the influenza. But certainly not in 2020 due to Covid-19.

Chart 1 per month

2016 = Blue, 2017 = Green, 2018 = Black, 2019 = Violet, 2020 = Red.

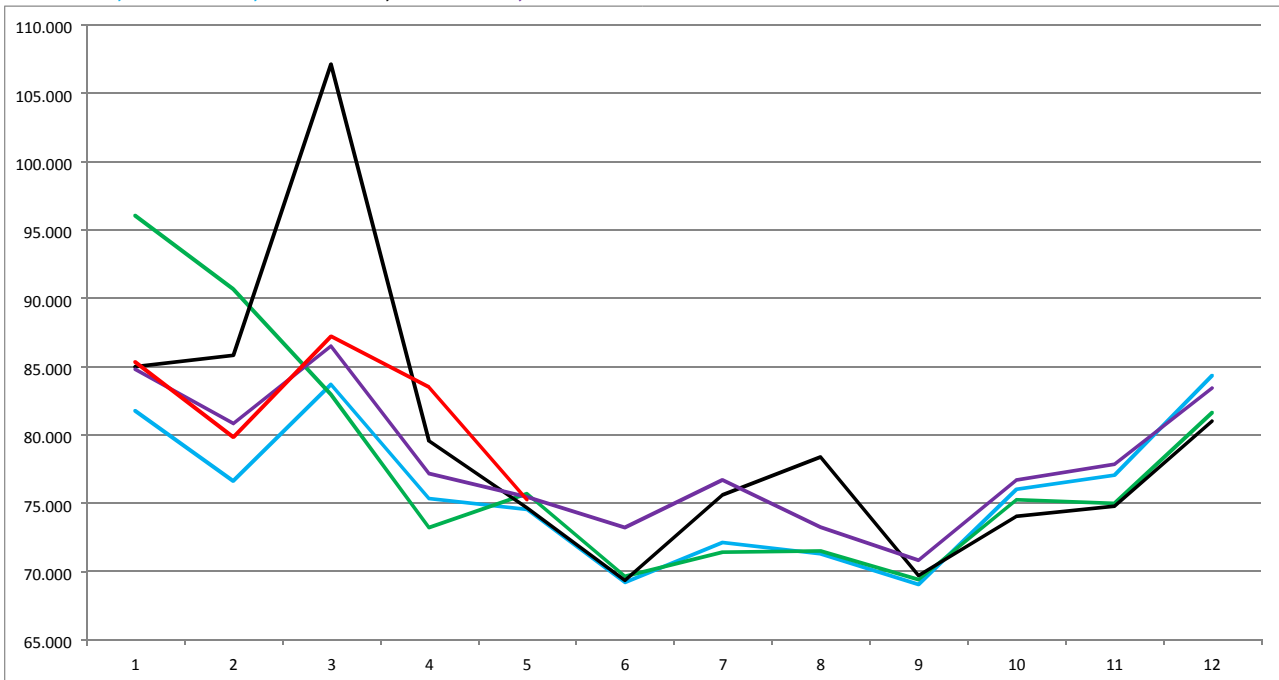


Chart 1 is self-explanatory. Excess mortality was only given for the 2017 + 2018 flu wave. And nobody was interested in these epidemics. Despite the vaccine, there is a mortality rate in 2017 + 2018, which was really 8.02% compared to April last year. Remarkably, the red line is almost exactly on the level of the violet line. It only flies out in April. Pandemic and epidemic - what a joke. Proven on a two A4 page.

Chart 2 - Monthly mortality

2017 = Green, 2018 = Black, 2019 = Violet, 2020 = Red.

